

2016 1500



HOW TO NAVIGATE

TO TURN THE PAGES

Touch/Click the arrows on either side of the brochure

TABLE OF CONTENTS

Touch/Click the Table of Contents button in the top navigation bar of the screen to advance to specific areas of interest

VIDEO COMPONENTS

To play video embedded within the brochure a live internet connection is required

FIND A DEALER



BUILD & PRICE



LEARN MORE
RAMTRUCKS.COM



**ONE TOOL IS
DESIGNED TO
MASTER EVERY
JOB OUT THERE.**





RAM 1500 DOES IT ALL.



Properly secure all cargo.

Properly secure all cargo.

LEARN MORE
RAMTRUCKS.COM

A LEGEND

5.7L HEMI® V8
22 MPG HWY*
395 HORSEPOWER
410 LB-FT OF TORQUE



5 YEAR/60,000 MILE⁽¹⁾ POWERTRAIN LIMITED WARRANTY Come to work with the credentials of the available 5.7L HEMI V8, and you're ready to take on whatever is in front of you, and given the uncompromising towing and payload numbers that loaded trailer or full-sized boat behind you. With advantages like Variable Valve Timing (VVT), the ingenious Multi-Displacement System (seamlessly transforming this robust V8 into a fuel-sipping four-cylinder when cruising) and the efficient power of its hemispherical heads, the HEMI V8 stands out and frequently stands above.

5.7L HEMI V8 CAPABILITY (WHEN PROPERLY EQUIPPED)

REGULAR CAB 6'4" BOX 9,200-LB MAX TOW CAPACITY 1,600-LB PAYLOAD CAPACITY	REGULAR CAB 8" BOX 10,640-LB MAX TOW CAPACITY 1,700-LB PAYLOAD CAPACITY	QUAD CAB 6'4" BOX 10,390-LB MAX TOW CAPACITY 1,800-LB PAYLOAD CAPACITY	CREW CAB 5'7" BOX 10,360-LB MAX TOW CAPACITY 1,700-LB PAYLOAD CAPACITY	CREW CAB 6'4" BOX 10,330-LB MAX TOW CAPACITY 1,690-LB PAYLOAD CAPACITY

A STAR

3.6L PENTASTAR® V6
25 MPG HWY†
305 HORSEPOWER
269 LB-FT OF TORQUE



5 YEAR/60,000 MILE⁽¹⁾ POWERTRAIN LIMITED WARRANTY The best compliment you can give this stellar performer is to acknowledge its world-known co-star. Mated to the impressive TorqueFlite® 8-speed automatic transmission (a powertrain component available with every engine in the Ram 1500 arsenal), the proven 3.6L Pentastar V6 delivers a quiet and cool performance, thanks to innovative Thermal Management Systems that keep both the engine and transmission operating at the ideal internal temperatures.

3.6L PENTASTAR V6 CAPABILITY (WHEN PROPERLY EQUIPPED)

REGULAR CAB 6'4" BOX 7,290-LB MAX TOW CAPACITY 1,500-LB PAYLOAD CAPACITY	REGULAR CAB 8" BOX 7,270-LB MAX TOW CAPACITY 1,880-LB PAYLOAD CAPACITY	QUAD CAB 6'4" BOX 7,610-LB MAX TOW CAPACITY 1,890-LB PAYLOAD CAPACITY	CREW CAB 5'7" BOX 7,470-LB MAX TOW CAPACITY 1,830-LB PAYLOAD CAPACITY

*EPA estimated 15 mpg city/22 mpg hwy based on Ram 1500 V8 4x2 with 8-speed transmission. Actual results may vary. †A note about this brochure: all disclaimers and disclosures can be found on the inside back cover. †EPA estimated 17 mpg city/25 mpg hwy based on Ram 1500 3.6L V6 4x2. Actual results may vary.

29
MPG HWY**



**NO ONE EVEN
COMES CLOSE.**

A LEADER

3.0L ECODIESEL V6
29 MPG HWY**
UP TO 754-MILE RANGE⁽²⁾
240 HORSEPOWER
420 LB-FT OF TORQUE



5 YEAR/100,000 MILE⁽³⁾ POWERTRAIN LIMITED WARRANTY Few engines carry the clout of the available 3.0L EcoDiesel V6; fewer still can approach the mpg, driving range and towing prowess of this torque-friendly powerplant. Mated only to the TorqueFlite® 8-speed automatic, the 3.0L EcoDiesel V6 delivers biodiesel (B20) capability; a zero-hassle DEF System; clean dual-filtration technology; minimal CO₂ levels; and oil change intervals up to 10,000 miles. The crowning touch? Its **best-in-class⁽³⁾ 29 mpg highway** fuel economy.**

3.0L ECODIESEL V6 CAPABILITY (WHEN PROPERLY EQUIPPED)

REGULAR CAB 8" BOX 9,210-LB MAX TOW CAPACITY 1,510-LB PAYLOAD CAPACITY	QUAD CAB 6'4" BOX 8,990-LB MAX TOW CAPACITY 1,600-LB PAYLOAD CAPACITY	CREW CAB 5'7" BOX 8,870-LB MAX TOW CAPACITY 1,540-LB PAYLOAD CAPACITY	CREW CAB 6'4" BOX 8,340-LB MAX TOW CAPACITY 1,260-LB PAYLOAD CAPACITY

**EPA estimated 21 mpg city/29 mpg hwy based on Ram 1500 HFE 4x2 with diesel engine. Actual results may vary. †EPA estimated 21 mpg city/29 mpg hwy based on Ram 1500 HFE 4x2 with diesel engine and 26-gallon fuel tank. Actual results may vary.



**GO FOR THE
LONG HAUL.**

SHORT OR LONG, YOU'RE IN CONTROL.

TOWING, HANDLING AND MANEUVERABILITY: WELCOME TO ELECTRONIC STABILITY CONTROL.^[4]

Drive a 2016 Ram 1500, where road manners, comfort and capability all ride hand in hand with safety and security. The indispensable Electronic Stability Control (ESC)^[4] System (standard on every model) is key.

This comprehensive and state-of-the-art system addresses multiple dynamics using technology that enhances control—especially while towing. The Ram 1500 ESC^[4] System features these fundamental assets:

All-Speed Traction Control helps regulate wheel spin. If slippage occurs during acceleration, automatic throttle control will reduce torque; in extremes (like accelerating from pavement to ice), it will apply the brakes and reduce the engine power to maintain control.

Trailer Sway Damping^[4] detects yaw and applies selective brake pressure on the tow vehicle's opposite side to counteract and reduce the sway.

ESC^[4]: TAKING BRAKING TO THE EXTREME.

The Ram 1500 braking system features optimized pedal travel to provide quick power assist. Rear wheel-speed sensors are positioned for protection against road elements. In its role as critical control system, ESC^[4] features multiple assets for braking; it even includes vehicle control when stationary. These encompass:

Antilock Brake System (ABS). Monitoring each wheel's speed, the Ram 1500 ABS design also incorporates back-up braking should one of the two braking circuits be compromised.

Electronic Brake-Force Distribution regulates brake pressure from front to rear to minimize stopping distances.

Ready Alert Braking senses the moment when the driver's foot is lifted from the accelerator; it applies an imperceptible brake force to ensure that pads and discs are lined up should an emergency stop be required.

Rain Brake Support automatically and seamlessly activates when the driver turns on the windshield wipers; all brake calipers gently pulse against their respective rotors to remove water from the pads.

Hydraulic Boost Compensation. Should a failure occur in the vacuum brake booster or any related line (e.g., a rupture from tough off-roading), the brake controller will run the ABS pump; our system is so sophisticated, it conveys the problem to the driver. Most important, the brakes perform as normal until the failure is serviced.

Hill Start Assist. When the vehicle is angled on hills or inclines, this system keeps your Ram 1500 stationary for two seconds after the brakes have been released or until the accelerator is depressed.

INTELLIGENT PARKING.

PARKSENSE[®] FRONT AND REAR PARK ASSIST^[5]

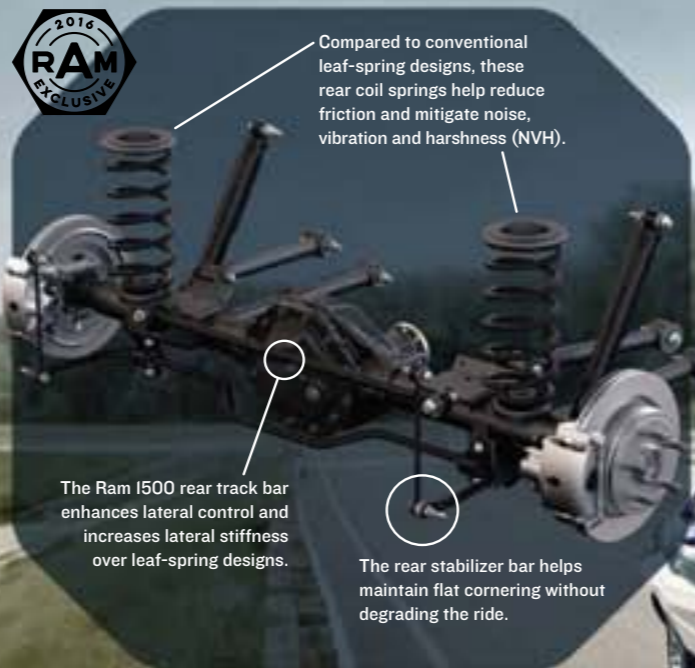
The available ParkSense Front and Rear Park Assist^[5] serves as a convenient aid, especially when parallel parking.

Multiple integrated sensors use ultrasonic waves to detect objects as far as 47 inches away from the bumpers, picking up the echo of a signal when it bounces off an object. Using classic echo triangulation, the system determines relative distance. Read-outs located in the gauge cluster display team up with audible chimes to notify the driver of proximity to front and/or rear objects.

CAPABILITY + COMFORT.

THE MULTILINK COIL SPRING REAR SUSPENSION.

Class-exclusive^[6]: a robust, dynamic rear suspension that simultaneously delivers occupant comfort with seriously impressive handling and road manners.



BE A KNOW-IT-ALL.

FROM TRAIL TO TRAILER, YOU'RE GOOD TO GO.

AVAILABLE PARKVIEW[®] REAR BACK-UP CAMERA^[5] Approach your camper or trailer with total confidence, and without a spotter or having to jump out of the cab. You get an on-screen display with active grid lines that let you pinpoint the trailer hitch—with a clear view of the rear each time you shift into Reverse.

AVAILABLE TRAILER TOW MIRRORS. These large 7 x 11-inch mirrors swing out on extended arms and capture the entire scene on each side of the truck. Towing an extra-wide trailer? Our Trailer Tow Mirrors are designed to give you the maximum view behind you.

AVAILABLE TRAILER BRAKE. Custom-designed to give you supreme control and confidence while trailering, the available **Trailer Tow Mirrors and Brake Group** puts it all together. The Group includes an electronic trailer brake controller, a Class IV hitch receiver and the Trailer Tow Mirrors, described above. The **Trailer and Traction Group** (available for Ram 1500 SLT models only) offers all the amenities of the Trailer Tow Mirrors and Brake Group, and adds a 3.92 axle ratio (with the HEMI[®] V8 or EcoDiesel V6 engines), or a 3.55 axle ratio (if equipped with the Pentastar[®] V6 engine).

^[6]Properly secure all cargo.

LEARN MORE
RAMTRUCKS.COM



AVAILABLE ACTIVE-LEVEL™ FOUR-CORNER AIR SUSPENSION SYSTEM.



LEARN MORE
RAMTRUCKS.COM

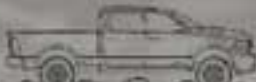


WHAT'S UNBELIEVABLE IS THAT NO ONE ELSE HAS ENGINEERING THIS REFINED. This available and class-exclusive[®] suspension system delivers five distinctive operational modes, with four-corner control resulting in an overall superior ride, irrespective of load. The engineering automatically equalizes your Ram 1500 while under heavy payloads, helping maintain a horizontal load plane, a level and constant driving profile and proper headlamp-to-road angle for consistently even forward illumination.



FINGERTIP SUSPENSION CONTROL. Our integrated switch bank makes operating the available Active-Level Four-Corner Air Suspension System a snap; push a button, and you've moved from one mode to another, ensuring the ideal ride height for your terrain and conditions.

AVAILABLE PREMIUM KEYLESS ENTER 'N GO!™ Functions include keyless (bladeless) operation to system controls for the Remote Start, the AllSecure[®] Locking System and the panic button; it even allows remote access of the Entry/Exit Mode of the available Active-Level Four-Corner Air Suspension System.



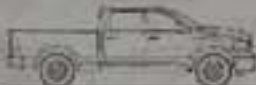
OFF-ROAD 2 MODE
+2.0 in

+ **OFF-ROAD 2 MODE.** Provides impressive ground clearance for the path and trail and generous angles for approach, departure and breakover. Difference from Normal: +2.0 in.



OFF-ROAD 1 MODE
+1.2 in, front; +0.9 in, rear

+ **OFF-ROAD 1 MODE.** Enjoy outstanding ride balance, with an extra degree of clearance when off-road scenarios are less severe than those that warrant Off-Road 2 Mode. Difference from Normal: +1.2 in, front; +0.9 in, rear.



NORMAL RIDE HEIGHT

NORMAL RIDE HEIGHT. The most comfortable balance of ride and handling for everyday driving.



AERO MODE
-0.6 in

- **AERO MODE.** At highway speeds, the Aero Mode automatically lowers the vehicle, reducing aerodynamic drag and "body roll," and measurably improving fuel efficiency. Difference from Normal: -0.6 in.



ENTRY/EXIT MODE
-2.1 in, front; -1.7 in, rear

- **ENTRY/EXIT MODE.** Automatically lowers the vehicle for easier entry/exit, loading/unloading, trailer hooking/unhooking. This mode is manually controlled by the internal button bank or remotely with the key fob. Difference from Normal: -2.1 in, front; -1.7 in, rear.

**ONLY
IN A
RAM**

**SUSPENDS IT
ALL. EXCEPT
BELIEF.**



THIS IS THE STORY OF RAM LEADERSHIP.

SOME STRENGTHS YOU COUNT. OTHERS YOU WEIGH. So measure it all: Ram 1500 frequently comes out on top. With class-exclusive^[6] suspensions culminating in the available Active-Level™ Four-Corner Air Suspension System. With a frame that builds on advanced high-strength steel and tough crossmembers. Ram 1500 advantages range from the available Active Grille Shutters in front to a structural rear bumper to an available factory-installed Class IV hitch receiver that bolts directly to the frame. After your review of what's here, there's more. Click over to RAMTRUCKS.COM



TONNEAU COVER. Built with efficiency in mind, the available tonneau cover facilitates movement of air over the bed. This has a positive effect on airflow and helps to further reduce aerodynamic drag.

AVAILABLE SPRAY-IN BEDLINER. Factory-installed for ideal finish, with the durability to help protect your Ram 1500 for years to come. (Not shown.)



THE TOW. Look at Ram 1500, and you're looking at towing. This structural rear bumper is rated for Class III towing, and easily handles trailers up to 5,000 lb when properly equipped. The available factory-installed Class IV hitch receiver bolts directly to the high-strength steel frame and handles up to 10,640 lb when properly equipped.



THE CONNECTION. Your trailer connector is easily accessible, with a separate adjacent lamp for easy connecting at night. All Ram 1500 models provide a 4- and 7-pin connector.



NEW LED BED LIGHTING. NO MORE LOOKING IN THE DARK.

New for 2016 Ram 1500: available LED Bed Lighting that welcomes working at night and eliminates adjusting a tonneau cover. Installed right at the factory, this convenient lighting augments the CHMSL-mounted lamp to illuminate the rear area of the cargo bed. With multiple controls—either from the instrument panel-mounted switch or a button on the remote key fob—you have ample illumination on each side of the cargo bed that makes loading and unloading during dark hours easier than ever.

THE CLASS-EXCLUSIVE^[6] MULTILINK COIL SPRING REAR SUSPENSION. Without exception, the competition employs leaf-spring technology. Leave it where it belongs—behind you. The Ram 1500 coil spring rear suspension offers the strength and durability the competition just can't match, with more lateral stiffness, greater vehicle control and ride quality so good, it's the preferred suspension technology for rail cars.

THE STEEL. Reducing weight contributes to fuel efficiency. Where heavy steel isn't needed, Ram 1500 engineers opted for down-gauged but stronger steel, so you can count on a full-size tough truck with fuel-sipping performance.



THE ELECTRIC POWER STEERING. The incorporation of electric power steering created a raft of advantages. Parasitic losses are lower—helping improve fuel efficiency. Operation is quieter. Speed-proportional assist translates into outstanding highway road feel—and minimal efforts in parking lots. Precise and less complex, it also eliminated hydraulic fluid—and the time used to check and replace it.

THE FRONT FRAME UNIT. Working with the high-strength steel frame are eight ultra-tough crossmembers; we also employ a hydroformed tubular front frame unit, also comprised of high-strength steel. It's an ultra-stiff component that further reduces weight—adding to fuel efficiency while providing exceptional ride characteristics.

THE FRONT SUSPENSION. The 2016 Ram 1500 utilizes superb technology: our short-/long-arm suspension with coil springs and stabilizer bar minimizes camber and toe change. You'll measure it in the savings that accompany reduced tire wear.



THE ACTIVE GRILLE SHUTTERS. This available asset has proven itself beyond doubt. The shutters instantly adapt to speed, load and engine needs to provide ideal engine cooling, while significantly reducing aerodynamic drag to help improve the fuel efficiency for Ram 1500 models.

THE SHOCK ABSORBERS. Ram 1500 engineering leaves no stone unturned—except the ones you're riding on. These shocks are tuned for optimum ride balance, with more resistance during upward wheel motion than downward. Count on a smooth ride with reduced harshness, notably on less-than-perfect road surfaces.



THE AERODYNAMICS. Contributing to the fuel-efficient performance and quiet ride, are exceptional aerodynamics. With touches like wind-tunnel tested and thoroughly refined windshield shapes and aero-formed side mirrors, the Ram 1500 exterior is sculpted to glide through air.



WHEEL-TO-WHEEL SIDE STEPS. These available robust, tubular, wheel-to-wheel side steps help improve aerodynamic efficiency, while easing access to the truck interior and bed.



ROOM WITH A VIEW.

LEARN MORE
RAMTRUCKS.COM



REFINEMENT

WHERE YOU MOST EXPECT IT.



LIMITED



LARAMIE LONGHORN

THIS CRAFT IS TRULY EXCEPTIONAL. The very singular Ram 1500 Laramie Longhorn: a crafted interior matched only by its stunning two-tone exterior. Inside, look for European burl wood accents. Beautifully etched leather. Heated and ventilated seats. Telematics and electronics that set the benchmark. What really makes a lasting impression is the modern instrumentation that nonetheless harks back to venerable silver watches and the Old West.

[LEARN MORE](#)
RAMTRUCKS.COM



DRIVER INFORMATION DISPLAY

Your 2016 Ram 1500 truck is a rolling powerhouse of knowledge, information and communications technology. And it's all in your command: available and customizable full-color seven-inch multiview display. Some 34 menu options and graphics conveying instant vehicle data. On select models, a six-ring instrumentation cluster. Available 8.4-inch touchscreen (to no one's surprise, Ram 1500 offers the largest in the class⁽⁶⁾) with some of the most state-of-the-art telematics through Uconnect[®].



[LEARN MORE](#)
RAMTRUCKS.COM

LIMITED

LIFE IS GOOD WHEN YOU'RE IN THE BLACK. Step in, and step up. The Ram 1500 Limited, with its all-Black leather interior, makes a powerful statement of how understated luxury can be. This top-of-the-line Ram comes with virtually every imaginable feature, including a heated steering wheel, full-color display, navigation, the class-exclusive⁽⁶⁾ Active-Level™ Four-Corner Air Suspension System, and much, much more.



LEARN MORE
RAMTRUCKS.COM

RAM 1500 REBEL



A TRUE REBEL STANDS OUT.



REBEL

ITS VERY NAME DEFIES CONVENTION. The standards for this customized Ram 1500 take a new tack. Think spacious Crew Cab with an interior that features a unique "tire-tread" embossed treatment on the two-tone seats. Outside, look for an aggressive Ram centric grille and tailgate. The ride: standard Active-Level™ Four-Corner Air Suspension System with a one-inch ride height increase. Power: 3.6L Pentastar® V6 (standard on 4x4 models) and 5.7L HEMI® V8 (standard, 4x2; available on 4x4). The final touches are the 17-inch wheels and huge 33-inch Toyo® Open Country tires.



Properly secure all cargo.



BUILT TO BE PART OF THE FAMILY.

WIDE OPEN SPACES



Convenient controls within reach.



Rotary Shifter and center console.



Media Hub and console storage.



Contrasting door panel treatment in Canyon Brown/Light Frost Beige.

LARAMIE®

[LEARN MORE
RAMTRUCKS.COM](https://www.ramtrucks.com)

SOPHISTICATION HAS A BIRTHPLACE. IT'S LARAMIE. This is where it started: a model that made opulence the bottom line—and then built from there. With standard monotone and available two-tone exterior treatments, leather-trimmed interior, standard 3.6L Pentastar® V6 and ParkView® Rear fBack-Up Camera¹ The Ram 1500 model that's perfect for you is, frankly, your birthright. Open it up at [RAMTRUCKS.COM](https://www.ramtrucks.com)



REDESIGNED CENTER CONSOLE.

In a Ram 1500, the available center console is a smart operations center, offering abundant storage and a Media Hub.

Improvements include a handy cell phone/tablet mount and updated cup holders. Shown at right, the new open bin design (Outdoorsman® trim shown).

Properly secure all cargo.



LEARN MORE
DRIVEUCONNECT.COM

Uconnect

EVERYTHING
YOU NEED
TO STAY
CONNECTED.

yelp

DISCOVER
NEW PLACES

AT HOME OR ON THE ROAD:
FIND THE BEST RESTAURANTS,
SHOPPING AND ENTERTAINMENT
VENUES—WITH A QUICK SEARCH.*

*Certain features not available
while vehicle is in motion.



START
YOUR RAM FROM AFAR

WARM UP THE ENGINE AND CABIN,
UNLOCK YOUR DOORS OR FLASH YOUR
HEADLAMPS—JUST BY USING
YOUR PHONE^[5]



NAVIGATE
YOUR ADVENTURES

GET TURN-BY-TURN DIRECTIONS
TO WHEREVER YOU'RE GOING—AND
DON'T HESITATE TO EXPLORE
ONCE IN A WHILE.

SiriusXM
SATELLITE RADIO

LISTEN
TO MUSIC, TALK
SHOWS AND SPORTS

ACCESS IT ALL, AND ALL THE TIME.
SIRIUSXM[®] SATELLITE RADIO^[4] LETS
YOU TUNE IN YOUR FAVORITES:
ARTISTS, RADIO HOSTS AND
(WE HOPE) WINNING TEAMS.



DRAG
AND DROP

NEW FOR UCONNECT[®] SELECT
FROM A MENU OF APPS AND DRAG
YOUR CHOICES INTO PLACE
ALONG THE BOTTOM ROW FOR
EASY CUSTOMIZATION.



SPEAK UP
AND BE HEARD

MAKE AND RECEIVE CALLS.
SEND AND GET TEXTS^[6] (NOT
COMPATIBLE WITH IPHONE[®])—
ALL WHILE DRIVING SAFELY,
WITH HANDS-FREE^[7] CAPABILITY.

9-1-1

ASSIST
IN EMERGENCIES

IT'S INVALUABLE AND POTENTIALLY
LIFE-SAVING. ACCESS 9-1-1 CALL^[8]
AND ROADSIDE ASSISTANCE^[9] WITH
THE TOUCH OF A BUTTON.



HOST
A HOTSPOT

UPLOAD AND DOWNLOAD, POST AND
SEARCH. UCONNECT WITH AVAILABLE
WIFI HOTSPOT^[10] LETS YOU CONNECT
YOUR DEVICES DIRECTLY TO THE WEB.

*Additional charges apply.



SEE
INTO THE FUTURE

TAKE ADVANTAGE OF WEATHER AND
TRAFFIC REPORTS WITH A FIVE-YEAR
TRIAL SUBSCRIPTION¹ TO SIRIUSXM[®]
TRAVEL LINK^[4] AND SIRIUSXM TRAFFIC^[4]

¹Available on select Uconnect systems.
See dealer for details.

LEARN MORE
RAMTRUCKS.COM



**RAM
1500
HAULS IT ALL**



RAMBOX® CARGO MANAGEMENT SYSTEM^[6]



The multi-purpose cargo bed extender/divider gives you expanded versatility for any items you're planning to haul. With the tailgate open, it can be mounted to extend the storage area while still keeping things secure. It can also be moved throughout the bed to act as a cargo divider and conveniently stores at the front of the bed when not in use.



Revised center console, now with cell phone holder.



In-door storage bins are oversized for large bottles.



Center storage doubles as a writing surface.



Dual glove boxes.



Available in-floor storage bins and under-the-seat storage spaces.



Available fold-flat load floors on Ram 1500 Quad Cab® and Crew Cab models.



The RamBox System bins greatly broaden cargo-carrying capability and convenience. Add any of the numerous available Authentic Accessories from Mopar—like this RamBox Cargo Organizer—and it's clear why Ram 1500 is the go-to truck for storage and functionality.



THE AVAILABLE CLASS-EXCLUSIVE[®] RAMBOX CARGO MANAGEMENT SYSTEM. Make your Ram 1500 stand out in every field. The ingenious RamBox System starts with two large, drainable, illuminated and lockable bed-side storage bins for everything from tools to sports equipment. The comprehensive system also includes a cargo bed extender/divider, cargo bed rails with four adjustable tie-down cleats, and, for 2016, the new LED Bed Lighting. It's factory-installed on Ram 1500 models with 5'7" and 6'4" beds and is engineered to leave room for standard sheets of building materials.

Tie-down points merely start the story of capability offered by the RamBox System cleats. Movable along the bed-side rails, you can adjust each cleat to correctly—and securely—lock in your cargo.



CUSTOM-MINDED

Ram 1500 Outdoorsman® in True Blue Pearl with available Mopar® accessories, including Heavy-Duty Splash Guards, Black Tubular Side Steps, Bed Step and 20-Inch Black Forged Wheels.

CUSTOMIZE YOUR RAM 1500.

Authentic Ram Parts and Accessories by Mopar go far beyond simply giving you a means to personalize your Ram 1500; they give you nearly unlimited potential to ramp up comfort, convenience and performance.

Mopar Accessories cover it all. You can enhance towing capability, ease getting in or out, select from a variety of protective devices and add flair to both the interior and exterior. Conceived and engineered by the same experts who designed your Ram truck, you're assured of perfect fit, function and finish.

Further advantages of Mopar are wide-ranging. Mopar Express Lane Service minimizes waiting and downtime. The Mopar Vehicle Protection® Plan is the only extended protection backed by the manufacturer. The online record-keeping of your service records are a click away, through our Mopar Owner Connect Web site and it's also where you'll get additional vehicle information and exclusive money-saving offers as a preferred Ram owner.

Mopar support. It's all about keeping you happy and keeping your Ram 1500 in top-notch looks and condition. Check it out at MOPAR.COM



Molded Splash Guards



Hard Folding Tonneau Cover*



Under-the-Rail Bedliner*



20-Inch Black Forged Wheel

*Available for 5-foot 7-inch, 6-foot 4-inch and 8-foot conventional beds. Properly secure all cargo.

RAM 1500 TRIM LEVELS

TRADESMAN®

Ready-to-work attitude with every economy you need (shown with optional RamBox® Cargo Management System)



POWERTRAIN

- 3.6L Pentastar® V6 24V Variable Valve Timing (VVT) engine/8-speed automatic (22B)
- 5.7L HEMI® V8 Multi-Displacement System (MDS) VVT engine/6-speed automatic (25B)
- 5.7L HEMI V8 MDS VVT engine/8-speed automatic (26B/27B)
- 3.0L EcoDiesel V6 engine/8-speed automatic (28B)

STANDARD FEATURES:



INTERIOR AMENITIES

- Heavy-duty vinyl 40/20/40 split bench seat
- Front armrest with three cup holders
- Power windows and locks (Quad Cab® and Crew cab)
- 2nd-row in-floor storage bins (Crew Cab)
- Rear folding seat
- Black vinyl floor covering
- Rear fixed window
- Tinted glass windows
- Rearview day/night mirror
- Manual air conditioning
- Instrument cluster with 3.5-inch Driver Information Display
- Black instrument panel bezel
- 3.0 AM/FM radio
- Six-speaker audio system
- Media Hub with audio jack and remote USB port
- 12-volt auxiliary power outlet

EXTERIOR FEATURES

- Black power heated mirrors (Quad Cab and Crew Cab)
- Incandescent taillamps
- Quad-halogen headlamps
- Black rear bumper
- Black front bumper
- Black upper fascia
- Black grille
- Black door handles
- 17-inch steel wheels
- P265/70R17 BSW All-Season tires
- Spray-in bedliner
- Locking tailgate

SAFETY & SECURITY

- Six air bags^[5] including driver and front-passenger, side-curtain and front seat side-mounted
- Electronic Stability Control (ESC)^[4]
- Antilock 4-wheel disc brakes
- Sentry Key® Theft Deterrent System
- Tire Pressure Monitoring System with Display

CAPABILITY & FUNCTIONALITY

- Electronic shift-on-the-fly part-time transfer case (4x4 only)
- Trailer Tow Wiring with 7- and 4-pin connector
- Class IV hitch receiver
- 26-gallon fuel tank (5'7" and 6'4" beds)
- 32-gallon fuel tank (8' bed)
- Speed control
- Power rack and pinion steering
- Front heavy-duty shock absorbers
- Rear heavy-duty shock absorbers
- Front stabilizer bar

GAS HFE TRADESMAN

Its very name spells out High Fuel Efficiency Regular Cab 4x2 only



POWERTRAIN

- 3.6L Pentastar V6 24V VVT engine/8-speed automatic (22P)

INCLUDES SELECT TRADESMAN FEATURES, PLUS:



INTERIOR AMENITIES

- Cloth 40/20/40 bench seat

EXTERIOR FEATURES

- HFE badge
- 17-inch aluminum wheels

CAPABILITY & FUNCTIONALITY

- 3.2l axle ratio
- Active Grille Shutters
- Stop/Start System

- Tri-folding tonneau cover
- Spray-in bedliner delete

- 220-amp alternator
- 800-amp battery
- Class IV hitch delete

ECODIESEL HFE TRADESMAN

Quad Cab 4x2 only



POWERTRAIN

- 3.0L EcoDiesel V6 engine/8-speed automatic (28E)

INCLUDES SELECT TRADESMAN FEATURES, PLUS:

EXTERIOR FEATURES

- Tri-folding tonneau cover
- HFE badge
- Spray-in bedliner delete

CAPABILITY & FUNCTIONALITY

- 3.55 axle ratio
- Class IV hitch delete
- Active Grille Shutters

- Wheel-to-wheel side steps
- 20-inch aluminum wheels

- 800-amp battery
- 230-amp alternator

Complete features, options and available packages listing for all trim levels in Buyer's Guide.

FIND A DEALER

BUILD & PRICE

LEARN MORE

RAM 1500 TRIM LEVELS

EXPRESS

Pure capability with functional interiors



POWERTRAIN

- 3.6L Pentastar® V6 24V Variable Valve Timing (VVT) engine/8-speed automatic (22C)
- 5.7L HEMI® V8 Multi-Displacement System (MDS) VVT engine/6-speed automatic (25C)
- 5.7L HEMI V8 MDS VVT engine/8-speed automatic (26C/27C)

INCLUDES SELECT TRADESMAN® FEATURES, PLUS:



INTERIOR AMENITIES

- Carpet floor covering
- Fog lamps
- Body-color full front fascia
- Body-color rear bumper
- Body-color grille
- Front and rear floor mats
- 20-inch aluminum wheels
- Class IV hitch delete
- Spray-in bedliner delete

ECODIESEL HFE EXPRESS

Quad Cab® 4x2 only



POWERTRAIN

- 3.0L EcoDiesel V6 engine/8-speed automatic (28F)

INCLUDES SELECT EXPRESS FEATURES, PLUS:

EXTERIOR FEATURES

- Tri-folding tonneau cover
- HFE badge
- Wheel-to-wheel side steps

CAPABILITY & FUNCTIONALITY

- 3.55 axle ratio
- Active Grille Shutters
- 800-amp battery
- 230-amp alternator

Complete features, options and available packages listing for all trim levels in Buyer's Guide.

SLT

Totally affordable, with an upscale exterior



POWERTRAIN

- 3.6L Pentastar V6 24V VVT engine/8-speed automatic (22G)
- 5.7L HEMI V8 MDS VVT engine/8-speed automatic (26G/27G)
- 3.0L EcoDiesel V6 engine/8-speed automatic (28G)

INCLUDES SELECT EXPRESS FEATURES, PLUS:



INTERIOR AMENITIES

- Cloth 40/20/40 bench seat
- Premium vinyl door trim panels with map pocket
- Overhead console with map lights
- Rear power sliding window
- Passenger-side sunvisor with mirror
- Rearview mirror with microphone
- Color-keyed instrument panel bezel
- Uconnect® 5.0 touchscreen system with Bluetooth® Voice Command^[10]

EXTERIOR FEATURES

- Chrome rear bumper
- Body-color upper fascia
- Chrome front bumper
- Chrome grille
- Body-color/chrome door handles
- B-pillar black-out treatment
- 17-inch aluminum wheels

Complete features, options and available packages listing for all trim levels in Buyer's Guide.

RAM 1500 TRIM LEVELS

REBEL

Customized features, do-it-all-anywhere attitude (shown with optional RamBox® Cargo Management System)



POWERTRAIN

- 3.6L Pentastar® V6 24V Variable Valve Timing (VVT) engine/8-speed automatic (22W)
- 5.7L HEMI® V8 Multi-Displacement System (MDS) VVT engine/8-speed automatic (26W)

INCLUDES SELECT SLT FEATURES, PLUS:



INTERIOR AMENITIES

- Unique Rebel premium cloth bucket seats with embossed tread pattern
- Rear 60/40 split folding seat
- Unique Rebel interior accents
- Heated leather-wrapped steering wheel with Red accent stitching
- Unique Rebel door trim panels
- Unique Rebel rubber floor mats
- Heated front seats
- Folding flat load floor storage
- Power 10-way driver's seat with power lumbar adjuster
- Steering wheel-mounted audio controls
- 115-volt auxiliary power outlet

EXTERIOR FEATURES

- Sport LED taillamps
- Bifunctional sport halogen projector headlamps
- LED fog lamps
- Black powder-coated front and rear bumper
- Black headlamp filler panel
- Unique Rebel Black grille with Ram logo
- Sport performance hood
- Black wheel flares
- Body-color door handles
- Ram tailgate badge
- Rebel tailgate badge
- Unique Rebel 17-inch aluminum wheels with Matte Black pockets
- Toyo® LT285/70R17E BSW Open Country tires

CAPABILITY & FUNCTIONALITY

- Front Bilstein® monotube performance shocks
- Rear Bilstein monotube performance shocks
- Class IV hitch receiver
- Active-Level™ Four-Corner Air Suspension System

AVAILABLE MONOTONE PAINT

- Shown with optional RamBox Cargo Management System

Complete features, options and available packages listing for all trim levels in Buyer's Guide.

*Lone Star model available only in Texas.

BIG HORN®/LONE STAR*

Richly appointed—and even a brand for Texas (shown with optional RamBox Cargo Management System)



POWERTRAIN

- 3.6L Pentastar V6 24V VVT engine/8-speed automatic (22S/22R)
- 5.7L HEMI V8 MDS VVT engine/8-speed automatic (26S/27S/26R/27R)
- 3.0L EcoDiesel V6 engine/8-speed automatic (28S/28R)

INCLUDES SELECT SLT FEATURES, PLUS:



INTERIOR AMENITIES

- Rear 60/40 split folding seat
- Premium cloth 40/20/40 bench seat
- Folding flat load floor storage
- Overhead console with Universal Garage Door Opener
- Sun visors with illuminating vanity mirrors
- Rearview auto-dimming mirror with microphone
- Black 6 x 9-inch power heated/folding mirrors with supplemental lighting
- Premium instrument cluster with 7-inch Driver Information Display
- Glove box lamp
- Ashtray lamp
- Rear dome lamp with on/off switch
- Leather-wrapped steering wheel
- Power 10-way driver's seat with power lumbar adjuster
- Steering-wheel mounted audio controls
- Uconnect® 8.4 touchscreen system with Bluetooth® Voice Command^[10]
- 115-volt auxiliary power outlet

EXTERIOR FEATURES

- Fog lamps
- Chrome grille with chrome billet inserts
- 20-inch aluminum chrome-clad wheels

SAFETY & SECURITY

- Security alarm
- ParkView® Rear Back-Up Camera^[5]
- Remote Start System
- ParkSense® Front and Rear Park Assist^[5]

CAPABILITY & FUNCTIONALITY

- Electronic shift-on-demand transfer case (4x4 only)
- Class IV hitch receiver

FIND A DEALER



BUILD & PRICE



LEARN MORE
RAMTRUCKS.COM

RAM 1500 TRIM LEVELS

OUTDOORSMAN®

Outfitted for the great outdoors (shown with optional RamBox® Cargo Management System)



POWERTRAIN

- 3.6L Pentastar® V6 24V Variable Valve Timing (VVT) engine/8-speed automatic (22T)
- 5.7L HEMI® V8 Multi-Displacement System (MDS) VVT engine/8-speed automatic (26T/27T)
- 3.0L EcoDiesel V6 engine/8-speed automatic (28T)

INCLUDES SELECT BIG HORN® FEATURES, PLUS:



INTERIOR AMENITIES

- Luxury Group – includes switchable dome lamp, ashtray lamp, glove box lamp, underhood lamp, illuminated vanity mirror, auto day/night rearview mirror, exterior mirrors with signal and puddle lamps, overhead console with Universal Garage Door Opener, leather-wrapped steering wheel, full-color Driver Information Display
- Premium cloth bucket seats with full-length floor center console
- Front and rear rubber floor mats

EXTERIOR FEATURES

- Lower two-tone paint with front and rear bumpers in accent color
- Body-color grille
- Accent-color wheel flares
- Black door handles
- 17-inch aluminum wheels
- LT265/70R17E OWL On/Off-road tires

SAFETY & SECURITY

- Remote Start and Security Group

CAPABILITY & FUNCTIONALITY

- 3.92 axle ratio
- 32-gallon fuel tank
- Tow hooks
- Transfer case skid plate shield
- Front suspension skid plate
- Antispin differential rear axle
- Electronic shift-on-the-fly part-time transfer case (4x4 only)



AVAILABLE MONOTONE PAINT

- Includes chrome rear bumper, chrome front bumper, body-color wheel flares

SPORT

Head-turning good looks—with character to match (shown with optional RamBox Cargo Management System)



POWERTRAIN

- 5.7L HEMI V8 MDS VVT engine/8-speed automatic (26L/27L)

INCLUDES SELECT BIG HORN FEATURES, PLUS:



INTERIOR AMENITIES

- Heated front seats
- Heated steering wheel
- Deluxe cloth high-back bucket seats with full center console
- Luxury Group
- Comfort Group
- Dual-Zone Automatic Temperature Control
- Instrument panel with premium bezel
- LED interior lighting
- Power adjustable pedals
- Rearview auto-dimming mirror with microphone

EXTERIOR FEATURES

- Premium bifunctional halogen projector Black headlamps
- Sport LED taillamps
- Auto-dimming exterior mirrors
- Body-color power heated/folding mirrors with supplemental lighting
- Body-color full front fascia
- Body-color rear bumper
- Body-color grille with chrome billet inserts
- Dual rear exhaust with chrome tips
- P275/60R20 OWL All-Season tires
- 20-inch polished/painted aluminum wheels

CAPABILITY & FUNCTIONALITY

- Class IV hitch delete



AVAILABLE BLACK SPORT GROUP

- Includes 20-inch semi-gloss Black aluminum wheels, Black badges, Sport performance hood, bifunctional projector headlamps, nine amplified speakers with subwoofer

RAM 1500 TRIM LEVELS

LARAMIE®

Where luxury and leather trim come together



POWERTRAIN

- 3.6L Pentastar® V6 24V Variable Valve Timing (VVT) engine/8-speed automatic (22H)
- 5.7L HEMI® V8 Multi-Displacement System (MDS) VVT engine/8-speed automatic (26H/27H)
- 3.0L EcoDiesel V6 engine/8-speed automatic (28H)

INCLUDES SELECT BIG HORN® FEATURES, PLUS:



INTERIOR AMENITIES

- Dual-Zone Automatic Temperature Control
- Heated front seats
- Heated steering wheel
- Ventilated front seats
- Leather-trimmed 40/20/40 bench seat
- Deluxe door trim panels
- Power adjustable pedals with memory
- Instrument panel woodgrain bezel
- Premium II 10-speaker audio system with subwoofer
- Power 10-way memory driver/6-way passenger seats

EXTERIOR FEATURES

- Premium LED taillamps
- Chrome 6 x 9-inch exterior mirrors with memory
- Bifunctional projector chrome headlamps
- Chrome grille with chrome wave inserts
- Body-color wheel flares
- 20-inch aluminum chrome-clad wheels
- Laramie tailgate badge



AVAILABLE TWO-TONE PAINT

- Includes lower Bright Silver paint with Bright Silver-accent wheel flares (shown with optional RamBox® Cargo Management System)

LARAMIE LONGHORN®

Sophistication meets power and comfort (shown with optional RamBox Cargo Management System)



POWERTRAIN

- 5.7L HEMI V8 MDS VVT engine/8-speed automatic (26K)
- 3.0L EcoDiesel V6 engine/8-speed automatic (28K)

INCLUDES SELECT LARAMIE FEATURES, PLUS:



INTERIOR AMENITIES

- Premium filigree leather bucket seats
- Premium door trim panels
- Luxury front and rear floor mats
- Full-length premium floor console
- Laramie Longhorn instrument cluster with 7-inch Driver Information Display
- Laramie Longhorn interior accents
- Heated second-row seats
- Uconnect® 8.4 touchscreen system with premium navigation
- Premium wood/leather-wrapped steering wheel

EXTERIOR FEATURES

- LED Bed Lighting
- Accent-color front and rear bumpers
- Lower accent two-tone paint
- Mopar® Bright Door Entry Guards
- Chrome grille with chrome mesh inserts
- Accent-color running boards and wheel flares
- Dual rear exhaust with chrome tips
- 20-inch polished aluminum wheels with Gold inserts
- Tow hooks
- Spray-in bedliner
- Unique Laramie Longhorn badges on doors and tailgate

SAFETY & SECURITY

- ParkSense® Front and Rear Park Assist^(S)
- Remote Start System

CAPABILITY & FUNCTIONALITY

- 32-gallon fuel tank



AVAILABLE MONOTONE PAINT

- Includes chrome front and rear bumpers, body-color wheel flares, 20-inch polished aluminum wheels with Silver inserts and cab-length chrome tubular side steps



RAM 1500 TRIM LEVELS

LIMITED

All-Black leather treatment joins stunning technology



POWERTRAIN

- 5.7L HEMI® V8 Multi-Displacement System (MDS) Variable Valve Timing (VVT) engine/8-speed automatic (26V)
- 3.0L EcoDiesel V6 engine/8-speed automatic (28V)

INCLUDES SELECT LARAMIE LONGHORN® FEATURES, PLUS:



INTERIOR AMENITIES

- Limited leather bucket seats
- Luxury front and rear floor mats
- Leather-wrapped grab handles
- Luxury door trim panels
- Rear-window defroster

- Limited cluster with 7-inch Driver Information Display
- Premium wood/leather-wrapped steering wheel

EXTERIOR FEATURES

- Body-color full front fascia
- Body-color rear bumper
- Unique Limited grille
- Chrome bodyside moldings
- Chrome belt moldings

- 20-inch painted aluminum wheels with chrome inserts
- Unique Limited tailgate
- Chrome wheel-to-wheel side steps (if equipped with the HEMI V8)

SAFETY & SECURITY

- Keyless Enter 'n Go™
- Rain-sensitive windshield wipers

- Auto High-Beam Headlamp Control

CAPABILITY & FUNCTIONALITY

- Active-Level™ Four-Corner Air Suspension System

- Tow hook delete



AVAILABLE CHROME BUMPER PACKAGE

- Includes chrome front and rear bumpers and body-color wheel flares

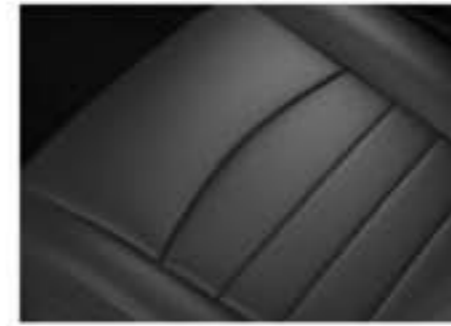
Complete features, options and available packages listing for all trim levels in Buyer's Guide.

RAM 1500 PACKAGES/EQUIPMENT GROUPS

	Gas HFE REG	EcoDiesel HFE QUAD	TRADESMAN® REG/QUAD/CREW	SPORT REG/QUAD/CREW	SLT REG/QUAD/CREW	BE-HORN®/LONE STAR® REG/QUAD/CREW	OUTDOORSMAN® REG/QUAD/CREW	SPORT REG/QUAD/CREW	LARAMIE® QUAD/CREW	LARAMIE LONGHORN® LIMITED CREW			
	P	E	F	B	C	G	S/R	T	W	L	H	K	V
CPOS PACKAGE													
BLACK EXPRESS GROUP													
• Popular Equipment Group													
• Power and Remote Entry Group													
• Black badges, Black bezel headlamps													
• Black painted grille													
• Uconnect® 5.0 system													
• 20-inch Black painted wheels													
BLACK SPORT GROUP													
• Sport performance hood													
• Dual-Zone Automatic Temperature Control (ATC)													
• Black badges													
• Premium 9-speaker sound system with subwoofer													
• Semi-gloss Black aluminum 20-inch wheels													
COLD WEATHER GROUP													
• Engine block heater and winter front grille cover (requires EcoDiesel V6)													
HEATED SEATS AND STEERING WHEEL GROUP													
• Heated cloth seats													
• Heated steering wheel													
• Dual-Zone ATC for Big Horn/Lone Star® and Outdoorsman models when equipped with Uconnect 8.4 or 8.4 NAV systems													
CONVENIENCE GROUP													
• Passive Entry/Keyless Enter 'n Go													
• Rain-sensing wipers													
• Auto High-Beam Headlamp Control													
EXTERIOR APPEARANCE GROUP													
• Chrome front and rear bumpers													
• Chrome grille surround													
• 17-inch painted aluminum wheels													
CHROME BUMPER PACKAGE													
• Body-color wheel flares and chrome front and rear bumpers													
LUXURY GROUP													
• Switchable dome lamp													
• Ashtray lamp													
• Glove box lamp													
• Underhood lamp													
• Illuminated vanity mirror													
• Auto day/night rearview mirror													
• Exterior mirrors with signal and puddle lamps													
• Overhead console with Universal Garage Door Opener, leather-wrapped steering wheel													
• Full-color 7-inch TFT programmable Driver Information Display													
• LED Bed Lighting													
MOSSY OAK® PACKAGE													
• Mossy Oak decal on rear box side													
• Camouflage pattern on exterior bed rail caps													
• Tailgate caps													
• Interior instrument panel center stack and door panel inserts													
• Includes spray-in bedliner if equipped with RamBox® System (requires Canyon Brown/Light Frost Beige interior; Crew Cab 4x4 models only)													
POPULAR EQUIPMENT GROUP													
• Cloth 40/20/40 bench seat													
• Carpeted flooring													
• Remote keyless entry													
• Floor mats													
• SiriusXM® Satellite Radio ⁽⁷⁾													
POWER AND REMOTE ENTRY GROUP													
• Premium vinyl door trim													
• Remote keyless entry													
• Foldaway Black power heated mirrors													
• Power windows with front one-touch down and power locks (Regular Cab only)													
PROTECTION GROUP													
• Tow hooks													
• Front suspension and transfer case skid plates (4x4 models only)													
REAR CAMERA AND PARK ASSIST GROUP													
• ParkSense® Front and Rear Park Assist ⁽⁸⁾ and ParkView® Rear Back-Up Camera ⁽⁹⁾													
REMOTE START AND SECURITY GROUP													
• Security alarm and Remote Start System													
R/T PACKAGE													
• 3.92 axle ratio and antispin differential, P285/45R22 BSW All-Season tires, 22 x 9-inch forged polished aluminum wheels and Sport performance hood (Regular Cab 4x2 6'4"-box models only)													
SPORT PREMIUM GROUP													
• Premium surround sound speaker system (Quad Cab® and Crew Cab only)													
TRAILER AND TRACTION GROUP													
• Trailer Tow Mirrors and Brake Group													
• 3.92 axle ratio with HEMI V8 or EcoDiesel V6													
• 3.55 axle ratio with Pentastar™ V6													
TRAILER TOW MIRRORS AND BRAKE GROUP													
• Electronic trailer brake controller													
• Class IV hitch receiver and 7 x 11-inch trailer tow mirrors (included with Trailer and Traction Group)													

S = Standard, O = Optional, P = Part of Package, - = Not available. Note: some features and/or applications may be late availability.

RAM 1500 INTERIOR FABRICS



Vinyl Diesel Gray
Tradesman®, Express and EcoDiesel HFE



Sedoso/Alloy Cloth Diesel Gray
Tradesman, Express, SLT and Gas HFE

Sedoso/Alloy Cloth Canyon Brown
SLT



Sedoso/Carbide Cloth Diesel Gray
Big Horn®/Lone Star® and Outdoorsman®



Sedoso/Carbide Cloth Canyon Brown
Big Horn/Lone Star® and Outdoorsman



Vinyl/Cloth with Embossed Tread Pattern Radar Red/Black
Rebel



Bristol/Sport Mesh Cloth Black
Sport



Bristol Leather/Perforated Leather Trim Light Frost Beige
Laramie®



Bristol Leather/Perforated Leather Trim Black
Sport and Laramie



Natura Plus Leather/Perforated Leather with Black Piping and Accent Stitching Cattle Tan
Laramie Longhorn®



Natura Plus Leather/Perforated Leather with Dark Saddle Piping and Tan Accent Stitching Canyon Brown
Laramie Longhorn



Natura Plus Leather with Laser Etching/Perforated Leather with Dark Saddle Piping and Tan Accent Stitching Canyon Brown
Laramie Longhorn



Natura Plus Leather/Perforated Leather with Medium Graystone Piping and Accent Stitching Black
Limited

*Lone Star model available only in Texas.

FIND A DEALER

BUILD & PRICE

LEARN MORE
RAMTRUCKS.COM

*Lone Star model available only in Texas.

RAM 1500 WHEELS



17-inch Argent Steel
Standard on Tradesman® (WFP)



17-inch Painted Aluminum
Standard on SLT, Outdoorsman® and Gas HFE
Optional on Tradesman (WFE)



17-inch Chrome-Clad Aluminum
Optional on Big Horn®/Lone Star® and Laramie® (WFJ)



17-inch Aluminum with
Matte Black Painted Pockets
Standard on Rebel (WFK)



20-inch Painted Aluminum
Standard on Express and EcoDiesel HFE
Optional on Outdoorsman (WHE)



20-inch Chrome-Clad Aluminum
Optional on Express (WR2)



20-inch Aluminum Painted
Semi-Gloss Black
Optional on Express and Outdoorsman (WHN)



20-inch Chrome-Clad Aluminum
Standard on Big Horn/Lone Star® (WHK)



20-inch Polished Aluminum
with Painted Pockets
Standard on Sport (WRF)



20-inch Aluminum Painted
Semi-Gloss Black
Packaged with Black Sport Group (WRL)



20-inch Chrome-Clad Aluminum
Standard on Laramie (WRG)



20-inch Aluminum with Polished Face
and White Gold-Clad Inserts
Standard on Two-Tone Laramie Longhorn® (WRH)



20-inch Aluminum with Polished Face
and Painted Inserts
Standard on Laramie Longhorn with Monotone Paint (WRJ)



20-inch Polished Aluminum
Optional on Laramie Longhorn (WRT)



20-inch Painted Aluminum
with Chrome Inserts
Standard on Limited (WRA)



22-inch Polished Forged Aluminum
Standard on Regular Cab R/T
Optional on Crew Cab Sport (WPZ)

CONFIGURATIONS

	Cab			Box			Seating	
	Regular Cab	Quad Cab*	Crew Cab	5' 7" Box	6' 4" Box	8' Box	40/20/40 Bench Seat	Bucket Seats
Tradesman	•	•	•	Available with Crew Cab	Available with All Cabs	Available with Reg Cab	•	N/A
Gas HFE	•	N/A	N/A	N/A	•	N/A	•	N/A
EcoDiesel HFE	N/A	•	N/A	N/A	•	N/A	•	N/A
Express	•	•	•	Available with Crew Cab	Available with Reg Cab or Quad Cab	N/A	•	N/A
SLT	•	•	•	Available with Crew Cab	Available with All Cabs	Available with Reg Cab	•	N/A
Rebel	N/A	N/A	•	•	N/A	N/A	N/A	•
Big Horn/Lone Star®	•	•	•	Available with Crew Cab	Available with All Cabs	Available with Reg Cab	•	Optional
Outdoorsman	N/A	•	•	Available with Crew Cab	Available with Reg Cab or Quad Cab	N/A	Optional	•
Sport	•	•	•	Available with Crew Cab	Available with All Cabs	N/A	N/A	•
Laramie	N/A	•	•	Available with Crew Cab	Available with Reg Cab or Quad Cab	N/A	•	Optional
Laramie Longhorn	N/A	N/A	•	•	•	N/A	N/A	•
Limited	N/A	N/A	•	•	•	N/A	N/A	•

*Lone Star model available only in Texas.

RAM 1500 EXTERIOR COLORS



Brilliant Black Crystal Pearl



Black Forest Green Pearl



Granite Crystal Metallic



Bright White



Pearl White



Bright Silver Metallic



Flame Red



Delmonico Red Pearl



Luxury Brown Pearl



Blue Streak Pearl



True Blue Pearl



Maximum Steel Metallic

Colors shown in Big Horn trim.

TWO-TONE OPTIONS

	Tradesman®	Express	SLT	Big Horn® / Lone Star®	Outdoorsman®	Rebel	Sport	Laramie®	Laramie Longhorn®	Limited
Delmonico Red Pearl	•	•	•	•	M, ■	N/A	•	M, ■	M, ■	•
Flame Red	•	•	•	•	M	M, ■	•	M, ■	M	N/A
Luxury Brown Pearl	•	N/A	•	•	M	N/A	N/A	M, ■	M, ■	N/A
Black Forest Green Pearl	•	N/A	•	•	M	N/A	N/A	M, ■	M, ■	N/A
Blue Streak Pearl	•	•	•	•	M, ■	N/A	•	M, ■	N/A	N/A
True Blue Pearl	•	•	•	•	M, ■	N/A	•	M, ■	M	•
Bright Silver Metallic	•	•	•	•	M, ■	M, ■	•	M	M	•
Granite Crystal Metallic	•	•	•	•	M, ■	M, ■	•	M, ■	M	•
Maximum Steel Metallic	•	•	•	•	M	N/A	•	M, ■	M	•
Brilliant Black Crystal Pearl	•	•	•	•	M	M	•	M, ■	M, ■	•
Pearl White	N/A	N/A	N/A	N/A	N/A	N/A	N/A	M, ■	M, ■	•
Bright White	•	•	•	•	M	M, ■	•	N/A	N/A	N/A

• = Available Color ■ = Monotone ■ = Black Lower ■ = Silver Lower ■ = White Gold Lower

*Lone Star model available only in Texas.



Outdoorsman shown in Bright Silver Metallic with Black lower



Laramie shown in Delmonico Red with Silver lower



Laramie Longhorn shown in Pearl White with White Gold lower

To see examples of all possible paint combinations, visit ramtrucks.com

RAM 1500 BUYER'S GUIDE

	P	E	F	B	C	G	S/R	T	W	L	H	K	V
CPOS PACKAGE													
ENGINE/TRANSMISSION													
3.6L Pentastar™ Flex Fuel 24V VVT V6 / 8HP45 8-speed automatic	22P	—	—	22B	22C	22G	22S/R	22T	22W	—	22H	—	—
3.0L EcoDiesel V6 / 8HP10 8-speed automatic	—	28E	28F	28B	—	28G	28S/R	28T	—	—	28H	28K	28V
5.7L HEMI® V8 with VVT and Fuel Saver Technology / 65RFE 6-speed automatic	—	—	—	25B	25C	—	—	—	—	—	—	—	—
5.7L HEMI V8 with VVT and Fuel Saver Technology / 8HP70 8-speed automatic (Regular Cab and Crew Cab)	—	—	—	26B	26C	26G	26S/R	26T	26W	26L	26H	26K	26V
5.7L HEMI V8 with VVT and Fuel Saver Technology / 8HP70 8-speed automatic (Quad Cab only)	—	—	—	27B	27C	27G	27S/R	27T	—	27L	27H	—	—
MECHANICAL FEATURES													
ACTIVE GRILLE SHUTTERS (included with 8-speed automatic transmission)	S	S	S	P	P	S	S	S	—	S	S	S	S
ALTERNATOR — 160-amp	—	—	—	S	S	S	S	S	S	S	S	S	S
— 220-amp (requires Stop/Start System)	—	—	—	—	—	—	—	—	—	—	—	—	—
— 230-amp (included with EcoDiesel V6)	—	S	S	P	—	P	P	—	—	—	P	P	P
AXLE — 3.21 ratio (not available with EcoDiesel V6)	S	—	—	S	O	S	S	S	O/S	S	S	S	S
— 3.55 ratio (included with 6-speed transmission; included with EcoDiesel V6; not available with HEMI V8 with 8-speed transmission; included with Trailer and Traction Group with gas V6)	—	S	S	O/P	S	O/P	O	O	—	—	O	O	O
— 3.92 ratio (included with 4x2 R/T; included with Trailer and Traction Group if equipped with HEMI V8 or EcoDiesel V6; included with Outdoorsman 4x2 model if equipped with EcoDiesel V6)	—	—	—	O	O	P	O	O/P	O/S	O/S	O	O	O
— Antispin rear differential (included with R/T 4x2 and Outdoorsman 4x4; included with Trailer and Traction Group)	—	—	—	O	O	P	O	O/S	O	O/S	O	O	O
BATTERY — 730-amp	—	—	—	S	S	S	S	S	S	S	S	S	S
— 800-amp (included with EcoDiesel V6)	S	S	S	P	—	P	P	—	—	—	P	P	P
ENGINE BLOCK HEATER (included with Cold Weather Group if equipped with EcoDiesel)	O	P	P	O/P	O	O/P	O/P	O/P	O	O	O/P	O/P	O/P
ENGINE COOLING — Heavy-duty (included with HEMI V8)	—	—	—	P	P	P	P	P	P	S	P	S	S
— Maximum-duty (optional with EcoDiesel V6)	—	—	—	O	—	O	O	—	—	—	O	O	—
FUEL TANK — 26-gallon (included with EcoDiesel V6)	S	S	S	S	S	S	S	P	S	S	S	P	P
— 32-gallon (included with 8'-box model; not available with EcoDiesel V6 or on Regular Cab short-box models; optional on 6'4" and 5'7"-box models)	—	—	—	O/P	O	P	O	S	O	O	O	S	S
SHOCK ABSORBERS — Front, heavy-duty	S	S	S	S	S	S	S	S	—	S	S	S	S
— Rear, heavy-duty	S	S	S	S	S	S	S	S	—	S	S	S	S
— Rear, extra heavy-duty (included with Outdoorsman 4x4 only)	—	—	—	—	—	—	—	—	—	—	—	—	—
— Front, Bilstein® performance	—	—	—	—	—	—	—	—	—	—	—	—	—
— Rear, Bilstein performance	—	—	—	—	—	—	—	—	—	—	—	—	—
STABILIZER BAR — Front	S	S	S	S	S	S	S	S	S	S	S	S	S
— Rear (not available on Regular Cab 4x2 8'-box models; included with 3.6L V6 on Regular Cab 4x2 6'4" box; included with Regular Cab R/T 4x2 6'4" box)	S	S	S	S	S	S	S	S	S	S/P	S	S	S
STEERING — Electronic rack and pinion	S	S	S	S	S	S	S	S	S	S	S	S	S
STOP/START SYSTEM — Gas HFE model only	S	—	—	—	—	—	—	—	—	—	—	—	—
SUSPENSION — Front, upper and lower A-arms, coil springs, twin-tube shocks	S	S	S	S	S	S	S	S	—	S	S	S	O
— Rear, five-link, coil springs, twin-tube shocks	S	S	S	S	S	S	S	S	—	S	S	S	O
— Active-Level™ Four-Corner Air Suspension System; includes front upper and lower A-arms, air springs, twin-tube shocks, rear five-link, air springs, twin-tube shocks, air compressor, dual closed-loop system storage tanks (Quad Cab and Crew Cab only; not available for Crew Cab 4x2 models with 6'4" box)	—	—	—	O	O	O	O	O	S	O	O	O	S
TRAILER HITCH — Class IV hitch receiver (included with Trailer Tow Mirrors and Brake Group)	—	—	—	S	O/P	P	S	S	S	O/P	S	S	S
TRANSFER CASE — Electronic part-time (4x4 models only)	—	—	—	S	S	S	—	S	S	—	—	—	—
— Electronic on-demand (4x4 models only)	—	—	—	—	—	—	—	—	—	—	—	—	—
WINCH — Tire carrier	S	S	S	S	S	S	S	S	S	S	S	S	S
EXTERIOR FEATURES													
BED RAILS — Chrome, tubular, for 5'7" and 6'4" bed sides (not available with RamBox® System, tonneau cover or Mossy Oak® Package)	—	—	—	—	O	O	O	O	O	O	O	O	O
BEDLINER — Spray-in	O	—	—	S	O	—	O	O	O	O	O	S	S
BODY MODEL — Regular Cab 6'4" box	S	—	—	O	O	O	—	—	—	—	—	—	—
— Regular Cab 8' box	—	—	—	O	O	O	—	—	—	—	—	—	—
— Quad Cab 6'4" box	—	S	S	O	O	O	O	O	—	O	O	—	—
— Crew Cab 5'7" box	—	—	—	O	O	O	O	O	S	O	O	O	O
— Crew Cab 6'4" box	—	—	—	O	O	O	O	O	—	O	O	O	O
BODYSIDE MOLDINGS — Chrome (optional with monotone paint only on Outdoorsman and Laramie)	O	—	—	—	O	O	—	—	—	—	O	—	S
BUMPERS — Front and rear Black	S	S	—	S	—	—	—	S	—	—	—	—	—
— Front and rear painted lower accent-color	—	—	—	—	—	—	—	S	—	—	—	—	—
— Front and rear chrome (included with Exterior Appearance Group; included with monotone paint; included with Limited Appearance Group)	—	—	—	P	—	S	P	—	—	—	S	P	P
— Rear body-color	—	—	—	S	—	—	—	—	—	—	—	—	S
DOOR HANDLES — Black (included with low-volume paint colors)	S	S	S	S	P	P	S	—	—	—	—	—	—
— Body-color	—	—	—	—	—	—	—	—	—	—	S	—	—
— Chrome with body-color bezel	—	—	—	—	S	S	—	—	—	—	S	S	S
EXHAUST — Single rear (included with 3.6L V6)	S	S	S	S	S	S	S	P	—	S	—	—	—
— Dual rear (included with HEMI V8 or EcoDiesel V6)	—	—	—	P	—	P	—	P	S	P	S	S	—
FASCIA — Front upper, Black	S	S	—	—	—	—	—	—	—	—	—	—	—
— Front upper, body-color (included with Limited Appearance Group)	—	—	—	—	S	S	—	—	—	—	S	P	—
— Front full, body-color	—	—	—	—	S	—	—	—	—	—	—	—	—
FOG LAMPS	—	—	S	—	S	—	S	S	S	S	S	S	S

*Lone Star model available only in Texas.

RAM 1500 BUYER'S GUIDE

	P	E	F	B	C	G	S/R	T	W	L	H	K	V
CPOS PACKAGE													
INTERIOR FEATURES													
AIR CONDITIONING — Manual	S	S	S	S	S	S	S	S	S	S	—	—	—
— Dual-Zone Automatic Temperature Control; included with Comfort Group (Quad Cab and Crew Cab only)	—	—	—	—	—	—	P	P	—	S	S	S	S
CLUSTER — Instrument, with 3.5-inch Driver Information Display	S	S	S	S	S	S	—	—	—	S	—	—	—
— Premium instrument, with 7-inch TFT programmable multiview Driver Information Display (included with Luxury Group)	—	—	—	—	—	—	S	S	—	S	S	—	—
— Premium Rebel instrument, with 7-inch TFT programmable multiview Driver Information Display	—	—	—	—	—	—	—	—	—	O	—	—	—
— Premium Laramie Longhorn instrument, with 7-inch TFT programmable multiview Driver Information Display	—	—	—	—	—	—	—	—	—	—	—	S	—
— Premium Limited instrument, with 7-inch TFT programmable multiview Driver Information Display	—	—	—	—	—	—	—	—	—	—	—	S	—
CONSOLE — Full-size floor console (included with front bucket seats)	—	—	—	—	—	—	P	S	S	S	P	—	—
— Premium full-size floor with leather-wrapped accents	—	—	—	—	—	—	—	—	—	—	—	S	S
— Overhead (included with Uconnect® 5.0 system)	—	—	—	P	P	S	—	—	—	S	—	—	—
— Overhead, with Universal Garage Door Opener (included with Luxury Group)	—	—	—	—	—	—	S	S	P	S	S	S	S
FLOOR MATS — Front, carpeted (Regular Cab; included with Popular Equipment Group)	—	—	—	P	S	S	S	—	—	S	—	—	—
— Front, rubber (Regular Cab)	O	—	—	O	O	—	—	—	—	O	—	—	—
— Front and rear, carpeted (Quad Cab and Crew Cab; included with Popular Equipment Group)	—	—	—	S	P	S	S	S	—	S	S	—	—
— Front and rear, rubber (Quad Cab and Crew Cab)	—	—	—	O	O	—	O	S	O	O	—	—	—
— Front and rear, luxury	—	—	—	—	—	—	—	—	—	—	S	S	—
LOAD FLOOR — Rear fold-flat (Quad Cab and Crew Cab only; included with premium cloth and leather seats)	—	—	—	—	—	—	S	S	S	S	S	S	S
MEMORY SYSTEM — Seats, mirrors, pedals, radio presets	—	—	—	—	—	—	—	—	—	—	S	S	S
PEDALS — Non-adjustable	S	S	S	S	S	S	S	S	S	—	—	—	—
— Power-adjustable	—	—	—	—	—	—	—	—	—	—	S	—	—
— Power-adjustable with memory	—	—	—	—	—	—	—	—	—	—	S	S	S
SEATS — Manual adjusting driver and front passenger seats	S	S	S	S	S	S	—	—	—	—	—	—	—
— Seat belt, front, shoulder height-adjustable	S	S	S	S	S	S	S	S	S	S	S	S	S
— Power 10-way driver	—	—	—	—	—	—	S	S	S	—	—	—	—
— Power 10-way driver and power 6-way passenger (included with *CJ seats)	—	—	—	—	—	—	—	—	—	P	—	—	—
— Power 10-way driver with memory and power 6-way passenger	—	—	—	—	—	—	—	—	—	—	S	S	S
— Power 2-way lumbar adjuster (driver's seat only)	—	—	—	—	—	—	S	S	S	S	S	S	S
— Heated, driver and front-passenger, includes heated steering wheel (included with Comfort Group)	—	—	—	—	—	—	P	P	S	S	S	S	S
— Ventilated front (included with *CJ seats)	—	—	—	—	—	—	—	—	—	P	S	S	S
— Heated, 2nd-row, Crew Cab only (included with *CJ bucket seats)	—	—	—	—	—	—	—	—	—	—	P	S	S
— Vinyl 40/20/40 split-bench front seat with folding front armrest/cup holder, floor-mounted storage tray on Crew Cab (Quad Cab and Crew Cab models include folding rear bench seat trimmed in vinyl) (*TX)	—	S	S	S	S	—	—	—	—	—	—	—	—
— Cloth 40/20/40 split-bench front seat, front armrest with cup holder (Quad Cab and Crew Cab models include cloth folding rear bench seat; included with Popular Equipment Group) (*V9)	S	—	—	P	P	S	—	—	—	—	—	—	—
— Premium cloth-trimmed 40/20/40 split-bench front seat, front armrest with cup holder, power 10-way driver's seat, power lumbar adjuster, front center-seat cushion storage, 115-volt auxiliary power outlet (Quad Cab and Crew Cab models include 60/40 split-folding rear bench seat with underseat storage and fold-flat load floor storage) (*MS)	—	—	—	—	—	—	S	O	—	—	—	—	—
— Premium cloth-trimmed low-back bucket seats, power 10-way driver's seat, power lumbar adjuster, full-length floor console, 115-volt auxiliary power outlet (Quad Cab and Crew Cab models include 60/40 split-folding rear bench seat trimmed in cloth with underseat storage and fold-flat load floor storage) (*MJ)	—	—	—	—	—	—	O	S	—	—	—	—	—
— Premium cloth/vinyl-trimmed high-back heated bucket seats with embossed tread pattern, power 10-way driver and 6-way passenger, power lumbar adjuster, full-length floor console, 115-volt auxiliary power outlet (includes 60/40 split-folding rear bench seat trimmed in cloth/vinyl with underseat storage and fold-flat load floor storage) (*N7)	—	—	—	—	—	—	—	S	—	—	—	—	—
— Premium cloth/vinyl-trimmed high-back heated bucket seats, power 10-way driver's seat, power lumbar adjuster, full-length floor console, 115-volt auxiliary power outlet (Quad Cab and Crew Cab models include 60/40 split-folding rear bench seat trimmed in cloth/vinyl with underseat storage and fold-flat load floor storage) (*AJ)	—	—	—	—	—	—	—	S	—	—	—	—	—
— Leather-trimmed high-back, ventilated and heated bucket seats, includes power 10-way driver and power 6-way passenger, power lumbar adjuster, full-length floor console, 115-volt auxiliary power outlet (Quad Cab and Crew Cab models include 60/40 split-folding rear bench seat trimmed in vinyl with underseat storage and fold-flat load floor storage) (*CJ)	—	—	—	—	—	—	—	—	—	O	—	—	—
— Leather-trimmed 40/20/40 split-bench heated and ventilated front with power 10-way/memory for driver and power 6-way passenger, power lumbar adjuster, front center-seat cushion storage and folding center armrest with cup holder, 115-volt auxiliary power outlet (Quad Cab and Crew Cab models include 60/40 split-folding rear bench seat trimmed in vinyl with underseat storage and fold-flat load floor storage) (*VL)	—	—	—	—	—	—	—	—	—	S	—	—	—
— Leather-trimmed high-back, ventilated and heated bucket seats, includes power 10-way driver and power 6-way passenger, power lumbar adjuster, full-length floor console, 115-volt auxiliary power outlet and heated 2nd-row on Crew Cab models (Quad Cab and Crew Cab models include 60/40 split-folding rear bench seat trimmed in vinyl with underseat storage and fold-flat load floor storage) (*GJ)	—	—	—	—	—	—	—	—	—	—	O	—	—
— Premium leather with laser-etched design, high-back ventilated and heated bucket seats, includes power 10-way driver and power 6-way passenger, power lumbar adjuster, premium full-length floor console, 115-volt auxiliary power outlet, heated 2nd-row seats; includes 60/40 split-folding premium leather with laser-etched design rear bench seat with underseat storage (available only in Canyon Brown) (*XJ)	—	—	—	—	—	—	—	—	—	—	S	—	—

*Lone Star model available only in Texas.

	P	E	F	B	C	G	S/R	T	W	L	H	K	V
CPOS PACKAGE													
EXTERIOR FEATURES (continued)													
GRILLE — Black surround, Black hex-link	S	S	—	S	—	—	—	—	—	—	—	—	—
— Black unique Rebel grille	—	—	—	—	—	—	—	—	—	S	—	—	—
— Chrome surround, Black hex-link (included with Exterior Appearance Group)	—	—	—	P	—	S	—	—	—	—	—	—	—
— Body-color surround, Black hex-link (included with R/T models)	—	—											

RAM 1500 SPECIFICATIONS



RAM 1500 TOWING—SAE J2807 COMPLIANT

Maximum loaded trailer weights (when properly equipped)

POWERTRAIN	AXLE RATIO	GCWR	REGULAR CAB				QUAD CAB®		CREW CAB			
			6'4" BOX		8' BOX		6'4" BOX		5'7" BOX		6'4" BOX	
			4x2	4x4	4x2	4x4	4x2	4x4	4x2	4x4	4x2	4x4
3.6L PENTASTAR® V6 / 8-SPEED AUTO	3.21	9,850	4,990	4,760	4,770	4,580	4,610	4,410	4,480	4,170		
	3.55	12,200	7,290	7,050								
	3.55	12,400			7,270	7,080						
	3.55	12,900					7,610	7,400	7,470	7,160		
3.0L ECODIESEL V6 / 8-SPEED AUTO	3.55	13,750			8,240	8,030	7,990	7,750	7,870	7,610		7,540
	3.92	13,750			8,240	8,030	7,990	7,750	7,870	7,610		7,540
	3.92	14,550										8,340
	3.92	14,750			9,210	9,030	8,990	8,750	8,870	8,610		
5.7L HEMI® V8 / 6-SPEED AUTO	3.21	12,350	7,220		7,040		6,790		6,760		6,730	
	3.92	14,325	9,200	8,990								
	3.55	14,400		9,060	9,090	8,850	8,840	8,710	8,810	8,640	8,780	8,540
	3.92	15,950			10,640	10,400	10,390	10,260	10,360	10,190	10,330	10,090
5.7L HEMI V8 / 8-SPEED AUTO	3.92	10,250	5,030									
	3.21	13,800	8,610	8,420	8,470	8,260	8,210	8,050	8,150	8,010	8,080	7,780
	3.92	14,350	9,160	8,970								
	3.92	15,950			10,620	10,410	10,360	10,200	10,300	10,160	10,230	9,830

RAM 1500 PAYLOAD

Maximum payload capacities (when properly equipped)

POWERTRAIN	GVWR	REGULAR CAB				QUAD CAB®		CREW CAB			
		6'4" BOX		8' BOX		6'4" BOX		5'7" BOX		6'4" BOX	
		4x2	4x4	4x2	4x4	4x2	4x4	4x2	4x4	4x2	4x4
3.6L PENTASTAR® V6 / 8-SPEED AUTO	6,010	1,440									
	6,025	1,500									
	6,300		1,560								
	6,600			1,880	1,690						
3.0L ECODIESEL V6 / 8-SPEED AUTO	6,800					1,890	1,710	1,830	1,640		
	6,600			1,510	1,290						
	6,945					1,510					
	6,950					1,600	1,390	1,540	1,330		1,260
5.7L HEMI® V8 / 6-SPEED AUTO	6,350	1,600	1,400								
	6,600			1,700	1,470						
	6,900					1,800	1,590	1,700	1,540	1,690	1,500
	6,200	1,350									
5.7L HEMI V8 / 8-SPEED AUTO	6,350	1,590	1,390								
	6,600			1,690	1,480						
	6,900					1,760	1,580	1,690	1,520	1,650	1,460

Numbers in **Black boxes** reflect max ratings. 1. Payload and Max Trailer Weights are estimated values. 2. All weights are shown in lb unless otherwise stated. 3. Payload and Max Trailer Weight values are rounded to the nearest 10 lb. 4. Payload = GVWR - Base Weight. 5. Trailer Weight Rating and Tow Vehicle Trailing Weight are calculated as specified in SAE J2807. 6. Payload and Trailer Weight Rating are mutually exclusive. 7. GAWRs, GVWRs and GCWRs should never be exceeded. 8. The recommended tongue weight for a conventional hitch is 10 percent of the gross trailer weight. The maximum tongue weight for Class IV hitch receiver is limited to 1,100 lb. 9. Weight-distributing hitch is recommended for trailers over 5,000 lb.

RAM 1500 INTERIOR DIMENSIONS

All dimensions are in inches (millimeters) unless otherwise noted.

	REGULAR CAB	QUAD CAB®	CREW CAB
SEATING CAPACITY, FRONT/REAR	3 / 0 or 2 / 0	3 / 3 or 2 / 3	3 / 3 or 2 / 3
FRONT			
HEAD ROOM	39.9 (1013.5)	41.0 (1041.4)	41.0 (1041.4)
LEG ROOM	41.0 (1041.4)	41.0 (1041.4)	41.0 (1041.4)
SHOULDER ROOM	66.0 (1676.4)	66.0 (1676.4)	66.0 (1676.4)
HIP ROOM	62.9 (1598.7)	63.2 (1605.3)	63.2 (1605.3)
REAR			
HEAD ROOM	N/A	39.7 (1008.4)	39.9 (1013.5)
LEG ROOM	N/A	34.7 (880.9)	40.3 (1023.3)
SHOULDER ROOM	N/A	65.7 (1668.8)	65.7 (1668.8)
HIP ROOM	N/A	62.9 (1598.3)	63.2 (1605.3)
INTERIOR VOLUME			
FRONT cu ft (cu m)	62.5 (1.8)	64.2 (1.8)	64.2 (1.8)
REAR cu ft (cu m)	N/A	52.4 (1.5)	61.1 (1.7)
TOTAL PASSENGER VOLUME (cu ft)	62.5	116.6	125.3

RAM 1500 EXTERIOR DIMENSIONS

All dimensions are for base models only and in inches unless otherwise noted.

	REGULAR CAB		QUAD CAB®	CREW CAB	
	6'4" BOX	8' BOX	6'4" BOX	5'7" BOX	6'4" BOX
OVERALL BODY WIDTH	79.4	79.4	79.4	79.4	79.4
OVERALL HEIGHT (4x2 / 4x4)	74.6 / 75.2	74.4 / 75.0	77.2 / 77.7	76.9 / 77.5	76.8 / 77.4
OVERALL LENGTH	209.0	231.0	229.0	229.0	237.9
TRACK — FRONT (4x2 / 4x4)	68.0 / 68.2	68.0 / 68.2	68.0 / 68.2	68.0 / 68.2	68.0 / 68.2
TRACK — REAR (4x2 / 4x4)	67.5 / 67.5	67.5 / 67.5	67.5 / 67.5	67.5 / 67.5	67.5 / 67.5
WHEELBASE	120.5	140.5	140.5	140.5	149.4
BED HEIGHT	20.1	20.2	20.1	20.0	20.1
BED LENGTH	76.3	98.3	76.3	67.4	76.3
BED WIDTH, WALL-TO-WALL	66.4	66.4	66.4	66.4	66.4
BED WIDTH, BETWEEN WHEELHOUSINGS	51.0	51.0	51.0	51.0	51.0



[1] Transferable. See dealer for complete details and a copy of the 5-Year/60,000-Mile Powertrain Limited Warranty. [2] Transferable. See dealer for complete details and a copy of the 5-Year/100,000-Mile Powertrain Limited Warranty. [3] Based on Standard Pickup class. EPA estimated 29 mpg highway based on Ram 1500 HFE EcoDiesel V6 4x2. Actual results may vary. [4] No system, no matter how sophisticated, can repeal the laws of physics or overcome careless driving actions. Performance is limited by available traction, which snow, ice and other conditions can affect. When the ESC warning lamp flashes, the driver needs to use less throttle and adapt speed and driving behavior to prevailing road conditions. Always drive carefully, consistent with conditions. Always wear your seat belt. [5] Always look before proceeding, electronic drive aid is not a substitute for conscientious driving; always be aware of your surroundings. [6] Based on latest available competitive information. Class based on light-duty pickups. [7] SiriusXM subscriptions for audio and data services are sold by SiriusXM to follow your trial subscription. **If you decide to continue listening after your trial, the subscription plan you choose will automatically renew thereafter and you will be charged according to your chosen payment method at then-current rates.** Fees and taxes apply. To cancel, you must call SiriusXM at 1-866-635-2349. See the SiriusXM Customer Agreement for complete terms and more information at siriusxm.com. All fees and programming subject to change. Your equipment and features for SiriusXM services will vary depending upon the vehicle you select and may be limited in select markets. [8] Vehicle must be within the United States, have network coverage and must be registered with Uconnect Access with an active subscription that includes the applicable feature and you must fulfill minimum subscription requirements. It must also be equipped with features that enable remote commands, such as keyless entry, and must be in active and usable cellular range. The Uconnect Access App must be installed and launched on your mobile device to use these remote commands. Remote features are available only on vehicles that are properly equipped. Check state and local laws regarding the use of remote start systems. [9] Voice Text Reply and Voice Texting features require a compatible mobile device enabled with Bluetooth Message Access Profile (MAP). iPhone and some other smartphones do not currently support Bluetooth MAP. Visit UconnectPhone.com for system and device compatibility. Ensure MAP is ON and incoming message notification is enabled. Vehicle must be registered for Uconnect Access and you must fulfill minimum subscription requirements. Also requires the use of a compatible smartphone that supports text messaging and Bluetooth. Visit UconnectPhone.com for system and device compatibility. [10] Requires a mobile phone equipped with the Bluetooth Hands-Free Profile. Visit UconnectPhone.com for system and device compatibility. [11] The 9-1-1 Call button will connect you directly with Emergency Assistance. If you accidentally press the button, you have 10 seconds to cancel the call by either pressing the 9-1-1 button on the rearview mirror or the Cancel button on the Uconnect touchscreen. [12] Provides direct-dial access to Roadside Assistance Service. Vehicle must be within the United States, have network coverage and must be registered with Uconnect Access with an active subscription that includes the applicable feature. Additional roadside assistance charges may apply. Check warranty for details. [13] WiFi subscription required. Vehicle must be registered with Uconnect Access and fulfill minimum subscription requirements. Vehicle must be properly equipped and in active and usable cellular range for WiFi usage. WiFi Hotspot does not enable direct communication between multiple in-vehicle devices. Factors affecting the performance of WiFi Hotspot include: cellular network, signal strength and quality, time of day, number of channels used by the service provider, type of connection, number of clients using WiFi Hotspot and client device. This feature is not intended for use by the driver while the vehicle is in motion. Always drive safely. [14] Uconnect Access is available only on equipped vehicles purchased within the contiguous United States and AK. Services can only be used where coverage is available, see coverage map for details. For a complete list of Uconnect Access services, please visit http://www.driveuconnect.com/features/uconnect_access/packages. [15] The Advanced Front Air Bags in this vehicle are certified to the new U.S. Federal regulations for advanced air bags. Children 12 years old and younger should always ride buckled up in a rear seat. Infants in rear-facing child restraints should never ride in the front seat of a vehicle with a passenger front air bag. All occupants should always wear their lap and shoulder belts properly.

©2015 FCA US LLC. All Rights Reserved. Chrysler, Ram, Mopar, AllSecure, Big Horn, HEMI, Laramie, Laramie Longhorn, the Mopar Owner Connect design, Mopar Vehicle Protection, Outdoorsman, ParkSense, ParkView, Pentastar, Quad Cab, Ram 1500 Express, R/T, RamBox, the Ram's Head logo, Sentry Key, TorqueFlite, Tradesman and Uconnect are registered trademarks and Active-Level, Keyless Enter 'n Go, HFE High Fuel Efficiency & Design and Rebel are trademarks of FCA US LLC.

Toyo is a registered trademark of TOYO TIRE & RUBBER CO., LTD. iPhone is a registered trademark of Apple Inc. Bluetooth is a registered trademark of Bluetooth SIG, Inc. Mossy Oak is a registered trademark of Haas Outdoors, Inc. Sirius, XM and all related marks and logos are trademarks of SiriusXM Radio Inc. Facebook and logo are trademarks of Facebook, Inc. The Twitter logo is a service mark of Twitter, Inc. The YouTube logo is a trademark of Google Inc. Yelp is a registered trademark of Yelp. Bilstein is a registered trademark of August-Bilstein GmbH & Co. Instagram and logo are registered trademarks of Instagram, Inc.

About this catalog: Since the time of printing, some of the information you'll find in this catalog may have been updated. Ask your dealer for details. Some of the equipment shown or described throughout this catalog may be available at extra cost. Specifications, descriptions, illustrative materials and all competitive comparisons contained herein are as accurate as known at the time this publication was approved for printing. FCA US LLC reserves the right to discontinue models at any time or change specifications without notice or without incurring obligation. Options may be required in combination with other options. For the price of the model with the equipment you desire, or verification of specifications contained here, see your Ram dealer.



Join our community on Facebook, submit your photos on Instagram, follow us on Twitter and check us out on YouTube.



Join fellow Ram enthusiasts and tell your story by posting comments, participating in discussions and sharing your photos and videos

THE RAM OUTFITTER

Cool signage. Apparel. Electronics. Tools. Sports gear and business items. With your 2016 Ram 1500, you've got a world of Ram merchandise that's just a click away. It's all at **Ram Outfitter**.

Treat yourself. Find the perfect gifts for the Ram enthusiast in your life. The Ram's Head identity leaves no doubt about the truck that rules.

RAMTRUCKS.COM/OUTFITTER



RAMTRUCKS.COM

Ram is a registered trademark of FCA US LLC.

74-383-2616_9/15 (248M)_Litho in U.S.A.



Research

[BUILD & PRICE](#)

[COMPARE MODELS](#)

[SIGN-UP FOR UPDATES](#)

Locate

[FIND A DEALER](#)

[SCHEDULE A TEST DRIVE](#)

Cost

[VIEW INCENTIVES & OFFERS](#)



RAM